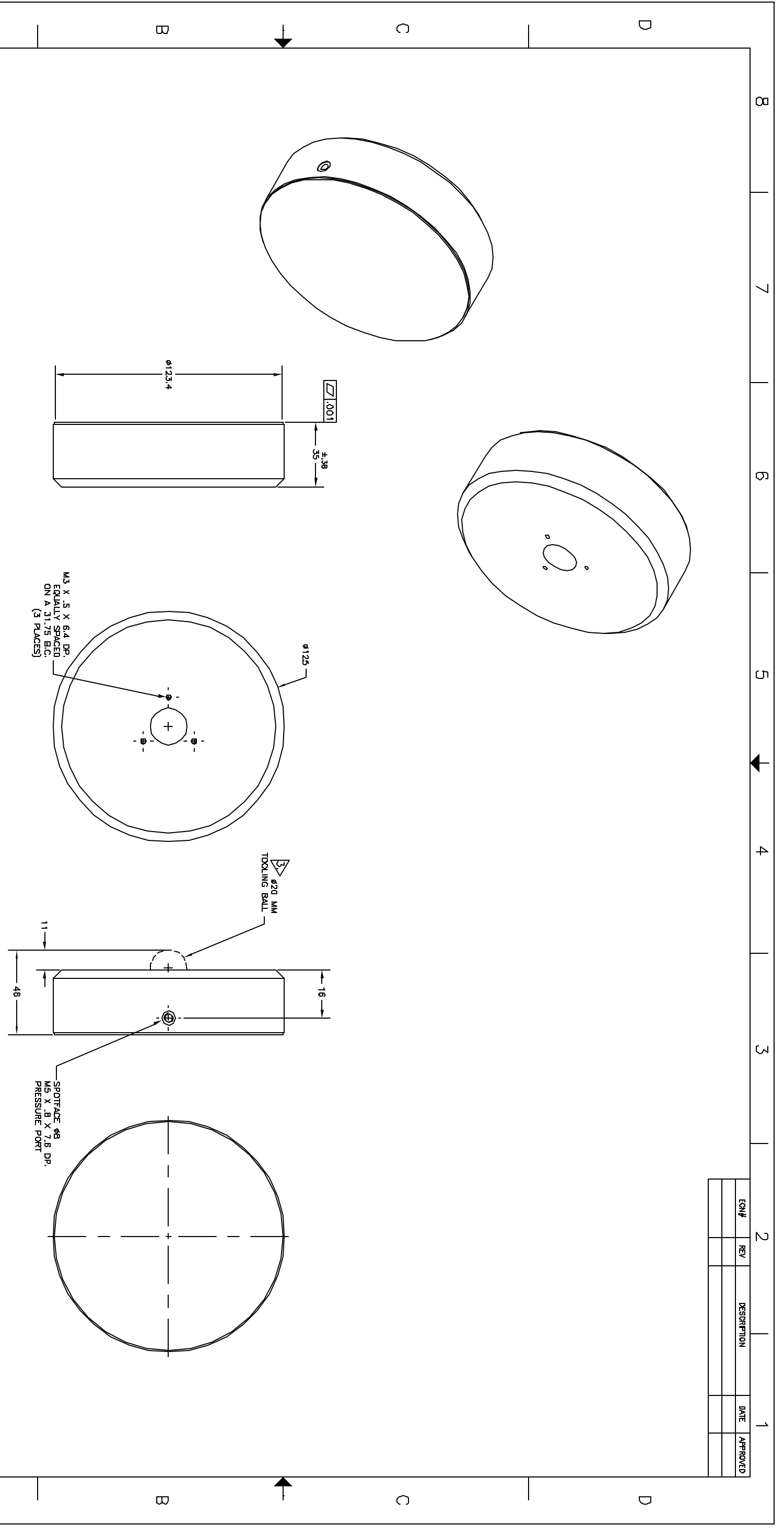


REV	DATE	APPROVED



- NOTE:
1. ALL DIMENSIONS ARE REFERENCE UNLESS OTHERWISE SPECIFIED.
 2. ALL DIMENSIONS ARE IN MILLIMETERS (mm).
- $\sqrt{\text{ }}$ TOOLING BALL IS REFERENCE ONLY. (NOT INCLUDED)

THE ABOVE DIMENSIONS REPRESENT APPROXIMATE
DIMENSIONS. THE ACTUAL DIMENSIONS SHALL BE
DETERMINED BY THE MANUFACTURER. THE MANUFACTURER
SHALL BE RESPONSIBLE FOR THE QUALITY OF THE
PARTS. THE MANUFACTURER SHALL BE RESPONSIBLE FOR
THE QUALITY OF THE PARTS. THE MANUFACTURER SHALL
BE RESPONSIBLE FOR THE QUALITY OF THE PARTS.

TOLERANCES (MM)				TITLE	DATE	REV	DESCRIPTION	DATE	APPROVED
HOLES $\pm .125$	OTHER $\pm .125$	PROFILES $\pm .125$	ALL OTHERS $\pm .125$	$\phi 125$ MM AIR BEARING	4/14/03	1	ANODIZED		
COLLAR $\pm .125$	OTHER $\pm .125$	PROFILES $\pm .125$	ALL OTHERS $\pm .125$	ALUMINUM/CARBON					
SCALE 1 = 1	SHT 1 OF 1	ACTUAL VIT. 1023 GP							
DATE 12/1/03	REV	REV	REV						

New Way Machine Components
ASTON, PA 19014

8 7 6 5 4 3 2 1